

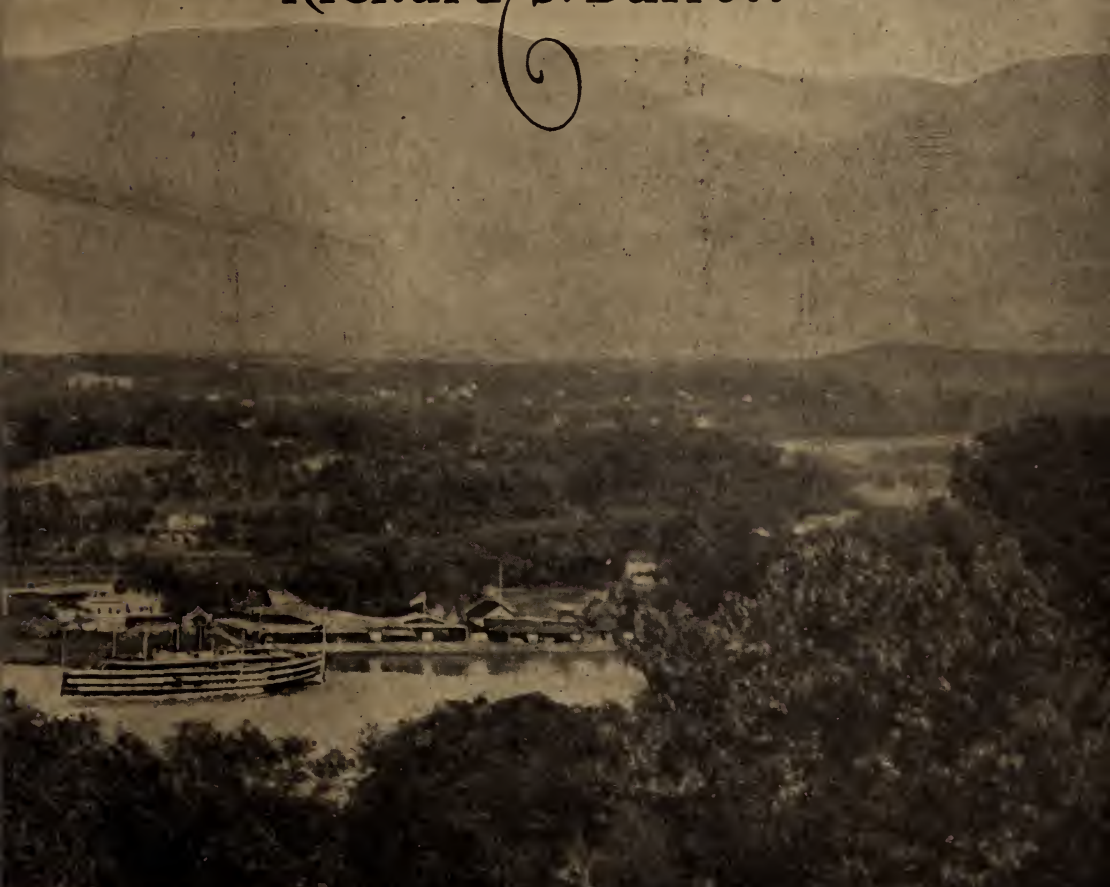
50/10

"The Land of Rip Van Winkle"

GREENE COUNTY

CATSKILLS

by
Richard S. Barrett



Issued by

CATSKILL CHAMBER OF COMMERCE

OCT 15 1949

AVERY ARCHITECTURAL AND FINE ARTS LIBRARY
GIFT OF SEYMOUR B. DURST OLD YORK LIBRARY

OYL 11638

Box 111

GREENE COUNTY--THE CATSKILLS.



LET me take you, on this pleasant summer day, for a journey by boat, train, or automobile, a little more than a hundred miles up the Hudson, the most picturesque river in the world. When we have traveled about ninety miles, north from New York, you will notice on the west a range of mountains that rise abruptly from a point ten miles from the river to a height of more than three thousand feet, and continue northward for nearly thirty miles. This is the main range of Rip Van Winkle Land, broken in two places by canyons three thousand feet deep, that are among the oldest in the world and the most picturesque spots in the Empire State.

From the summit of these ranges, a series of ranges extends westward for more than 40 miles, forming a vast, natural mountain park in which the most wonderful scenery in America is to be found.

This section is known as the Catskills, or the Land of Rip Van Winkle, and although its fame has extended over the greater part of a century, few people realize the extent of territory embraced in the region and the variety of scenic attractions to be found within its borders.

Picture to yourself Greene County, the Heart of the Catskills, with its four hundred thousand acres, more than half of which are over two thousand



LOOKING WEST FROM CATSKILL

feet above sea level; where twenty-six peaks tower Heavenward to more than three thousand feet; where seventy-five beautiful waterfalls, miniature lakes and rippling streams combine to make a series of pictures unequalled in the world; and where a temperature of from fifteen to twenty degrees lower than that of the city adds zest to out-of-door life; and you will agree that it is the ideal place for summer outings.

Stand at the summit of the ranges and look over more than twenty thousand square miles of territory lying at your feet, where fertile farms and prosperous villages seem like toy places, and you will get an idea of the wonders of creation.

Greene County creates a feeling of reverence, because within its borders will be found the best work of the Creator, who apparently formed it as the ideal vacation land for the great cities that now exist at the mouth of the Hudson.



PICTURESQUE SPOTS IN GREENE COUNTY

The Indians held the Catskills in awe, as the abode of the Manitou or Master Spirit, who ruled over the country, and this superstition to some extent was felt by the early Dutch settlers of 1644, who regarded them as the

"Glorified Overlook," from where the Spirit of Hendrick Hudson watched over the river that bears his name. Both superstitions were undoubtedly due to the remarkable formation known as the "Sleeping Giant," formed by southern peaks, in which the outline of a human being in a reclining form, with abdomen, chest, chin, nose, eyebrow and forehead, is plainly defined.

Used as a refuge by the renegade Brant and his savage followers during their raids on the Hudson Valley, and providing refuge for the participants in Shay's Rebellion in Massachusetts, Greene County has played a prominent part in the history of the Empire State, and some of the old landmarks of pre-Revolutionary days, including the old arch bridge at Leeds, and the Van Dusen Mansion, the fortress of the olden days, still exist.

As the object of this booklet is to describe the section as a vacation centre, the writer is compelled to omit many interesting historical facts and legends.

It is ninety-nine years since the first tourists visited the Catskills. Last



BATHING IN THE CATSKILLS

season more than two hundred and twenty-five thousand vacationists passed their outings in the section.

To the initiated it is not difficult to account for the popularity of Greene County, because it has all the essentials for a delightful vacation and offers the greatest latitude in the matter of elevation, rates for board, amusement and social surroundings, combined with a variety of scenery unequalled on the globe.

It is possible to spend vacations at elevations of a few hundred feet or at more than 2,300 feet above sea level, where accommodations varying from those of a small farm house, in the heart of the woods, to the modern hotel, with service and cuisine equal to the hotels found in the larger cities, are at your disposal.

Rates for board vary from \$12.00 weekly to \$75 and upward; the amusements include practically every form of diversion except sea bathing, and the social affairs range from the hop at the small hotel or many amusement halls scattered over the section, to the brilliant social functions at the larger houses.

One may occupy one of the many beautiful cottages, in Sunset, Twilight or Santa Cruz Parks, at Haines Falls; the Onteora Club or Elka Park, near Tannersville; the Highland Colony or Ledgemoor, at Palenville, representing investments of more than ten million dollars in summer homes; or if they prefer, may camp in the heart of a wilderness as dense as the Maine woods, and still be within a few minutes' walk of business centers, with modern stores and places of amusement.

While every section of the Greene County Catskills is picturesque, the nature lover will find the most inspiring scenery in the Canyons formed by erosion, in the countless ages since the upheaval of the Devonian Sea formed these mountains.



PLAATERKILL CLOVE

The Kaaterskill Canyon, extending from Haines Falls eastward to Palenville, is more than three thousand feet deep and is considered the most attractive bit of scenery known to travelers, who have climbed from its base to the summit, to see the twenty or more waterfalls, including the Kaaterskill and Haines Falls, the former being the highest waterfalls in New York State.

The Plaaterkill Canyon, five miles south, extending from Platte Clove

to West Saugerties, a distance of two miles, is 2,300 feet deep and has eighteen beautiful waterfalls.

Other canyons noted for scenic beauty include the Stony Clove, extending from between Tannersville and Hunter, southward to Phoenicia; the Bushnellville Clove, extending from Lexington to Shandaken, and the Mink Hollow Gap, from Elka Park to Lake Hill.

Good roads lead through all of the cloves or canyons and they are accessible from every section of the county.

The lakes of the Catskills are few, but are noted for their beauty, and the vacationist coming to this section should not fail to visit the Kaaterskill, Green, Silver, Crystal and Black Lakes.

It is difficult to find more attractive scenery than one finds along the streams of the Catskills, and the trip through the glens formed by Catskill



AUSTIN'S GLEN, CATSKILL

Creek, the Shingle Kill, Schoharie Creek, and the Batavia Kill, will repay the artist or photographer, while the fisherman will enjoy these streams to the utmost, because of the splendid fishing they afford.

Churches of all denominations, including Catholic churches, will be found in a majority of the resorts, throughout the county, or within easy access.

The completion of a new road, the Rip Van Winkle Trail, from Catskill, through Kiskatom, Palenville, the Kaaterskill Canyon (with an eight per cent. grade up the mountain), Haines Falls, Tannersville, Hunter and Lexington, to Prattsville; and the nearing completion of the Mohican Trail from Catskill, through South Cairo, Cairo, Acra, East Windham, Brooksburgh, Windham and Ashland, to Prattsville, where it joins the Rip Van Winkle Trail and continues westward to Stamford, give to automobilists the most picturesque trails in America, and a study of the Scenic Circle

Map, in this book, will show a greater variety of automobile trips than can be found in any section of the state.

Camping sites established by the State Conservation Commission along the trails as follows:

Rip Van Winkle Trail between Lexington and Hunter.

Mohican Trail between Acra and East Windham and between East Windham and Windham.

Other sites have been established at Plaate Clove, east of Tannersville, and between Westkill and Lexington, and between Hensonville and Hunter.

In addition to its fame as a summer resort section, Greene County has an enviable reputation as an agricultural, dairying and fruit raising centre, and its nearness to the great markets of New York, and splendid transpor-



THE HUDSON RIVER EXPRESS

tation facilities by water and trunk line railroads, provide a market reached quickly and at low transportation rates.

Routes from New York to the Catskills follow the Hudson river; the Hudson River Day Line steamers, the West Shore Railroad, the New York Central Railroad and the Saugerties Evening Line, as well as macadamized roads on either side of the river, to the gateways, forming the way of approach.

The daylight trip through the Hudson by the handsome and commodious steamers of the Hudson River Day Line is the most popular way of reaching the mountains, the boats leaving Desbrosses Street at 9 a. m., West 42d Street at 9:20 a. m., and West 129th Street at 9:40 a. m. daily including Sunday, for Kingston and Catskill, the main gateways to the region, the system furnishing the ideal means to reach the mountains in comfort. Service on the modern steamers Hendrick Hudson, named after the discoverer of the river, the Robert Fulton, inventor of the steamboat, Washington Irving, who made the Catskills famous, DeWitt Clinton and Albany, is

unexcelled in America, and has done much to make the mountains popular.

Night boat service to the resorts of Greene County is maintained by the Saugerties & New York Steamboat Co., leaving at 6 p. m. daily except Sunday from Christopher Street, in New York, for the pretty village of Saugerties, one of the gateways to the Catskills, from where, on the arrival of the steamers *Ida* and *Robert A. Snyder*, there is automobile stage connection for Catskill, Palenville, Kiskatom, Platte Clove, Elka Park and Tannersville.

The Catskill Evening Line from New York (Christopher Street pier) gives to the resorts in Greene County and to shippers and manufacturers a daily freight service that is unequalled and is a great asset to the region.

The West Shore Railroad, from New York and Albany to Coxsackie, Athens, Catskill, Saugerties and Kingston; and the New York Central Railroad to Rhinecliff (ferry to Kingston), Tivoli (ferry to Saugerties), Greendale (ferry to Catskill), Hudson (ferry to Athens), Newton Hook (ferry to Coxsackie) are the trunk line roads to the Catskills.



CATSKILL-GREENDALE FERRY CROSSING THE HUDSON

Only one railroad extends into the mountains—the Ulster & Delaware Railroad, from Kingston to Oneonta, with a branch to Hunter and to Kaaterskill—connecting at Kingston Point with the Hudson River Day Line and with the West Shore R. R., over which it operates through vested trains during the summer months to the heart of the county.

Places reached by this railroad include: Kaaterskill (station for Hotel Kaaterskill and Catskill Mountain House), Laurel House station, Haines Falls (station for Twilight, Sunset and Santa Cruz Parks), Tannersville (station for Platte Clove, Elka Park, the Onteora Club and East Jewett), Hunter (station for Lexington, Windham, Jewett Centre, Jewett Heights, Big Hollow, Jewett, Windham, Hensenville, Brooksbury and Ashland), Stony Clove, Lanesville, Edgewood, Shandaken (station for Bushnellville and Lexington), Fleischmanns (station for Halcottville), Grand Gorge (station for Prattsville and Ashland).

Catskill, through the completion of the new highways and the inauguration of automobile buses, is also a station for the Catskill Mountain House, Haines Falls, Tannersville, Prattsville, Ashland, Windham and East Wind-

ham, and regular connections are made with the Day Line boats during June, July and August.

Catskill is the gateway to Leeds, Green Lake, Kiskatom, Palenville, South Cairo, Cairo, Purling, Round Top, Acra, South Durham, Kyle Camp,



WINTER SPORTS IN GREENE COUNTY

Lawrenceville, Freehold, East Durham, Greenville, Oak Hill, Gayhead, Urlton, Surprise, Result, Climax and Medway.

Greenville, Oak Hill, Urlton, Surprise, Result, Climax and Medway may also be reached from Coxsackie.

Athens is reached by Day Line or New York Central R. R. to Hudson (ferry to Athens), or West Shore R. R. to West Athens.

CATSKILL.

Catskill, at the beginning of the Rip Van Winkle and Mohican Trails, the most picturesque trails in the state, is the largest of the vilages in Greene County, and the county seat, with a population of more than 5,000, and a summer population of more than 15,000. It has two National and one Savings Bank, a Building and Loan Association, two co-operative Fire Insurance Companies, one live daily and three progressive weekly newspapers, a Community Theatre erected at a cost of \$125,000, a Moving Picture Theatre, paved streets, splendid Fire Department, with the latest word in apparatus, a Municipal Ferry plying between Greendale and Catskill,



THE RIP VAN WINKLE TRAIL

splendid Public and Parochial Schools, Churches of every denomination, more Fraternal Organizations than are usually found in towns of its size, a progressive Chamber of Commerce, some of the handsomest Public Buildings in the Hudson Valley, including Court House, Y. M. C. A., Public Library and State Armory.

A diversity of business interests, including the manufacture of knit goods, cigars, shirtwaists, cut glass, brick and cement, as well as the harvesting of ice during the winter, makes it one of the most thriving vilages of its size in the state.

As a summer resort it is ideal, offering every form of amusement, and having more than fifty hotels and boarding houses, charmingly located on the hills overlooking the vilage and the Hudson Valley.

Some of the most picturesque scenery in the entire région will be found in the sections where Catskill Creek has torn its way through the rocks, and Austin's Glen is considered one of the picture spots of the section.

In the village, the Saulpaugh, the Norwood, the Smith House, the Heidelberg and the Allerton are open during the entire year. Splendid restaurants, well equipped garages and the thousands of automobile parties who visit Catskill annually, make it the busiest place in the Catskills during the summer months.



THE BEACH AT LEEDS

HOTELS AND BOARDING HOUSES

House	Proprietor.	Accom.	House	Proprietor.	Accom.
Grant House,	Stedman & Lowndes..	300	New Saulpaugh,	E. Thomas and S.	
The Norwood,	Norwood Hotel Co., Inc	50	Saulpaugh		100
Smith House,	J. Kleinberg	100	Heidelberg Inn,	R. Henke, Jr.....	40
The Allerton,	Mrs. J. Allerton.....	30	Cozy Cottage,	A. J. Raymond.....	40
Glenclyff,	K. Livingston.....	50	Creekside,	F. C. Plusch.....	100
Salisbury House.....		100	Edgemere,	Arbogast & Bush.....	50
Swiss House,	N. Cinn.....	50	Shady Lawn,	Mrs. M. Concannon....	50
Howard Hall,	C. H. Haussler.....	50	Woodburne-on-Hudson,	F. H. Kerr... ..	50
Pine Grove Cottage,	J. Bloomfield..	40	The Elwood,	Mrs. M. Waggoner....	20
Orchard Grove,	D.D.VanValkenburgh	40	Sylvan Retreat,	W. Crapser.....	25
Terrace Hill House,	H. Halpert.....	35	The Balsams,	H. C. Porter.....	25
Sunset Hill Farm,	H. Lasher.....	25	Glen Mary,	Ira B. Kerr.....	25
Maple Brook Farm,	Mrs. J. Holmes	25	Austin Farm House,	S. C. Sutton....	20
Embogcht House,	C. Plusch.....	50	Ranch 101,	W. H. Bogardus.....	20
Cecil Villa,	Louis Green.....	40	Fancher House,	A. Fancher.....	20
Park Grove House,	Joseph Kammayer	25	Otis View Manor,	F. L. Farkis....	40
Western View House,	M. M. Sager	25	Catskill White House,	R. Growitz... ..	25

KYLE CAMP.

In one of the prettiest sections of the mountains, Kyle Camp, a famous summer school for boys, has made the former hamlet of Lawrenceville a busy section, and with every form of diversion added to its educational advantages, Kyle Camp is one of the attractions of the county.

LEEDS.

Leeds lies along Catskill Creek and on the Mohican Trail, and is the most interesting settlement in the county from a historical point of view. Its famous arch bridge and old landmarks including the historic Van Dusen Mansion, both built before the Revolution, as well as the old Dutch Reformed Church, are worthy of a visit.

A rock beach, along Catskill Creek, makes the finest bathing spot in the section. Dance halls, noted for the excellent order maintained and the splendid orchestras employed, with numerous hotels and boarding houses filled with members of the younger set, make it one of the liveliest places to be found.



THE FAMOUS LEEDS BRIDGE

HOTELS AND BOARDING HOUSES

House	Proprietor.	Accom.	House	Proprietor.	Accom.
Elizabeth House,	Mrs. A. Peters....	100	Gypsy Point House,	Mrs. A. Murtha	100
Pine Grove House,	Eugene Woife...	50	Green Valley Farm,	S. Speigelman..	30
The Dirckskill,	M. Nolan.....	40	The Madison,	L. & J. Gelis.....	40
The St. George,	George Badeau....	50	Van Dusen Mansion,	Mrs. E. Potter	40
Desmond Shore House,	P. Warshaw	40	Pfegel Villa,	H. Pfegel.....	25
Catskill Villa.....		100	Brooklyn House,	Mrs. L. DeNyse....	50
Margaret House,	F. M. Carpenter...	40	Phelan DeLury House,	C. Bunce....	30
Leeds Bridge Hotel,	M. McCabe....	25	Homequest Villa,	Mrs. A. Sickles..	20
Vedder Farm House,	C. Vedder....	20	Hunters' Rest,	J. Kelly.....	25
Brookside Farm,	Mrs. A. Sines.....	20	Yorkville House,	L. F. Kahn.....	100

GREEN LAKE.

(Postoffice Catskill R. D.)

Three miles off the Mohican Trail, reached by a picturesque road from Leeds, Green Lake, a small hamlet taking its name from the largest lake

in the Catskills, on the shores of which the hamlet has been built, is another noted summering place where crowds congregate during the summer months to enjoy the boating, bathing, fishing and dancing that make it a popular recreation centre, and here too will be found some of the coziest boarding houses in the mountains.

HOTELS AND BOARDING HOUSES

House	Proprietor	Accom.	House	Proprietor	Accom.
Gutrie's Farm Boarding Houses, Inc.,			Perry House, Myron Perry..... 60		
George Gutrie.....		225	Lake View House, I. L. Jamieson....		35
Green Lake Inn, George Desmond....		30	Overlook Farm, W. G. Williams....		40
Green Lake Casino, A. Schubert....		30	Van Hoesen's, J. Van Hoesen.....		20



ALONG THE SHORE OF GREEN LAKE

ROUND TOP.

The section of Cairo township on the mountains south-west of the village is known as Round Top. This section resembles the Adirondacks in many ways, and has an elevation of nearly 1,200 feet. In the vicinity are located some of the best known hotels and boarding houses of the Cairo section.

HOTELS AND BOARDING HOUSES

House	Proprietor	Accom.	House	Proprietor	Accom.
Maple Lawn Hotel, J. Schad.....		200	Glens Falls House, C. Ernst.....		75
Winter Clove House, Mrs. L. Plank		125	The Morley.....		100
Maple Villa		40	Trout Brook House, Mrs. J. Pitcher		60
Round Top Ravine, J. H. Moore....		50	Glen Craig House, G. R. Walker....		45
Winding Brook Farm, Mrs. J. Titus		25	Locust Grove Farm, B. D. Finke....		25
Pine Grove House, J. Richards....		40	Glenwood, J. Stein.....		75
Central Farm, Mrs. B. Barry.....		30	Beuna Vista, A. Oritz.....		40
Birch Lawn, Mrs. W. Richards....		40	Mountain Dale, M. Covey.....		40

CAIRO.

Ten miles from Catskill, the Mohican Trail enters the village of Cairo, and we are impressed by its attractive appearance, enhanced by the high mountain peaks that form the background of the village; the beautiful shade trees that are on both sides of the trail, and the cozy appearance of its business section, hotels and homes.

Windham High Peak, Acra Point and Stoppel Point stand like giant sentinels guarding the village, and the climb from the village over the trails leading to the summit of the mountain repays one in the beautiful views obtained.

The Shingle Kill and Catskill Creek, flowing through the village, add



MAIN STREET, CAIRO

boating, bathing and fishing to the attractions, and due to the energy of the business men's association known as the "Boosters' Club," Cairo and the other settlements in the township, including South Cairo, Purling, Round Top and Acra, are among the busiest resorts in Rip Van Winkle Land.

The Cairo Fair, held during mid-August, is the most famous Agricultural Fair in Eastern New York.

Splendid amusement halls, conducted in an orderly manner, add to the attractions here.

HOTELS AND BOARDING HOUSES

House	Proprietor	Accom.	House	Proprietor	Accom.
Rockwood-in-the-Pines,	W. A. Brous	250	Hotel Walters,	Julius Schad	100
Round Top House,	W. G. True	60	Round Top View,	C. C. Lock	50
Ellis House,	J. J. Ellis	70	Hillcrest Manor,	A. Millett	75
Schermerhorn Cottage,	A. C. Schermerhorn	30	Windmere,	Mrs. E. Caniff	35
			Reservoir Farm,	E. Bingel	20
			Mountain Inn,	H. Muehlbauer	30

SOUTH CAIRO.

The Mohican Trail, just before reaching Cairo, passes through a pretty little hamlet along Catskill Creek, known as South Cairo, which has several attractive hotels and boarding houses.

HOTELS AND BOARDING HOUSES

House	Proprietor	Accom.	House	Proprietor	Accom.
Victory House		100	Rose Villa		100
Pine Villa, Ira D. Vail		50	Myers Farm, Mrs. F. Myers		20
Appledale, C. Shaefer		30	Apple Tree Villa, Mrs. C. S. Duncan		25
Fair View Manor, D. Cole		40	Rural Home, Sanford Duncan		30

PURLING.

A mile off the Mohican Trail, and overlooking Cairo village, the Purling Heights section of the township contains some of the most attractive



SHINGLE KILL FALLS, PURLING

scenery and coziest hotels and boarding houses, and the beautiful Shingle Kill Falls, one of the prettiest waterfalls in the section.

HOTELS AND BOARDING HOUSES

House	Proprietor	Accom.	House	Proprietor	Accom.
Dellwood, E. A. Jones		125	Evergreen Grove, Mrs. F. Moore		100
Pine Grove Villa, Bloch & Beglichter		50	Baldwin's Hotel, B. Baldwin		50
Overlook House, Moritz Lennon		50	The Columbian, M. Burger & Sons		150
Central View, J. Vealie		40	Shinglekill House, J. R. Ryerson		40
Echo Cottage, Mrs. C. V. Story		20	Meadow Brook Farm, C. B. Arnold		25
Valley View House, W. J. Lennon		25	Oak Grove Cottage, Mrs. W. C. Over-		
Sunset View House, E. M. Warner		25	baugh		25

ACRA.

Continuing along the Mohican Trail, after passing through Cairo, one reaches the section of Cairo known as Acra, located on the east slope of Acra Point, where small but comfortable boarding houses and a variety of amusements, as well as attractive surroundings, appeal.

HOTELS AND BOARDING HOUSES

House	Proprietor	Accom.	House	Proprietor	Accom.
Cedar Lawn,	Guy Meddaugh.....	50	Acra House,	J. Seeth.....	50
Tremont House,	W. Gottlieb.....	100	Falls Farm,	D. Stead.....	50
Mountain View Farm,	O. Murta....	50	Mt. Laurel Farm,	F. W. Dorfeld....	30
	Groveside Cottage,	Cornwall & Paul			25



THE MOHICAN TRAIL THROUGH CAIRO AND ACRA

EAST WINDHAM

Following the Mohican Trail, after winding around the mountain from South Durham, a journey offering a series of wonderful views of the surrounding country, the summit is reached at East Windham, and the picturesque view from the summit is one of the most entrancing in the Eastern states.

While East Windham is a small hamlet, there is a diversity of amusement here, and some very excellent hotels at which an enjoyable vacation may be had at 2,300 feet above sea level.

HOTELS AND BOARDING HOUSES

House	Proprietor	Accom.	House	Proprietor	Accom.
Butts Hotel,	J. J. Barry.....	100	Grand View Mt. House,	J. W. Whit-	
The Barrymore,	A. Barry.....	100	beck		60
Crystal Spring Inn,	Raymond French	40	Summit House,	A. Copstein.....	150
High Peak House,	Mrs.M.L.Sherman	40	Mt. Zoar Villa,	L. Moeller.....	50

WINDHAM, HENSONVILLE AND BROOKSBURGH.

Continuing along the Mohican Trail from East Windham, westward, Brooksburgh, a small hamlet, is passed, and soon one sees to the south the attractive village of Hensonville, just before entering the "Village Beautiful," as Windham has been termed.

Mountains surround one on all sides, towering to a height of a thousand feet above the villages, which enjoy altitudes of more than two thousand feet above sea level.

A beautiful miniature lake provides boating, bathing and fishing, and the lake as well as the picturesque Schoharie Creek add to the scenic beauty of the region, while attractive homes, handsome hotels and boarding houses



THE MOHICAN TRAIL AT WINDHAM

combine to give the township of Windham a national reputation for beauty and cleanliness.

HOTELS AND BOARDING HOUSES

House	Proprietor	Accom.	House	Proprietor	Accom.
Osborn House,	Hon. Geo. W. Osborn	225	The Pines,	W. J. Soper	100
Windham House,	M. Sanford	100	Coe's Hotel,	O. R. Coe	75
Pleasant View House,	O. A. Cole	100	Munson House,	L. W. Munson	75
Thompson House,	I. Thompson & Son	100	Hayden House,	Thos. Hayden	50
Mt. Hayden House,	J. & R. Martini	75	Crest Park,	E. E. Munson	75
Brainard Farm,	E. Brainerd	50	Briarwood,	Mrs. Chas. Minkler	25
Westmere,	M. Dunham	25	Private House,	Mrs. S. J. Osborne	20

HENSONVILLE

House	Proprietor	Accom.	House	Proprietor	Accom.
Pleasant Home,	D. Davis Est.	50	Orchard Grove,	G. C. Seeley	60
Hensonville Hotel,	H. H. Smith	40	Shady Lawn,	J. J. Travis	40
Hensonville Heights House,	W. Heinrich	25	Millbrook Farm,	Linus Peck	20
			Mulford House,	Claude Mulford	25
			Loughren House,	George Loughren	30

BROOKSBURGH

House	Proprietor	Accom.	House	Proprietor	Accom.
Newcomston Park		100	Huscher Cottage,	Mrs. J. Huscher	16

ASHLAND.

On the Mohican Trail between Windham and Prattsville, Ashland is another quaint and charming resort, popular with vacationists who prefer the smaller viilages.

HOTELS AND BOARDING HOUSES

House	Proprietor	Accom.	House	Proprietor	Accom.
Campbell House,	J. C. Campbell	20	Holdridge House,	F. E. Holdridge	40
Tuttle Farm,	A. G. Tuttle	12	Locust Grove,	G. W. Fiero	15
Martin Farm House,	F. Martin	20	Tompkins House,	S. H. Tompkins	12
Mt. Rest Farm,	A. C. Tuttle	12	Demming Cottage,	T. W. Demming	20

PRATTSVILLE.

The Mohican and Rip Van Winkle Trails meet at Prattsville, a delightful village on the Schoharie Creek, and continue to the western Catskills,



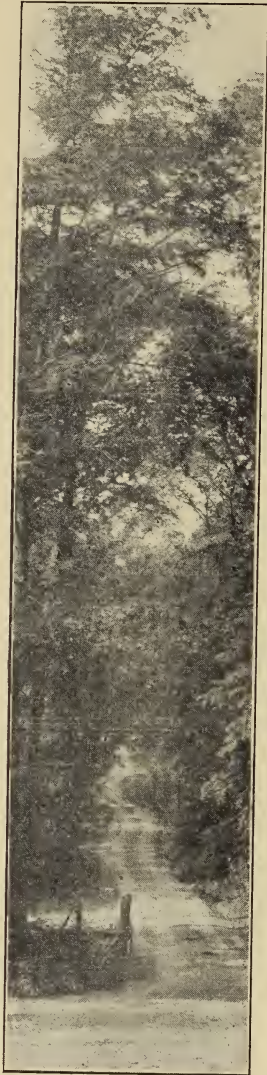
DEVASEGO FALLS, PRATTSVILLE

following the course of the Great Highway of the pioneer days.

There is much of interest at Prattsville, including the Devasego Falls and Pratt's Rocks, and there have been found here the finest examples of petrified forests in the state.

HOTELS AND BOARDING HOUSES

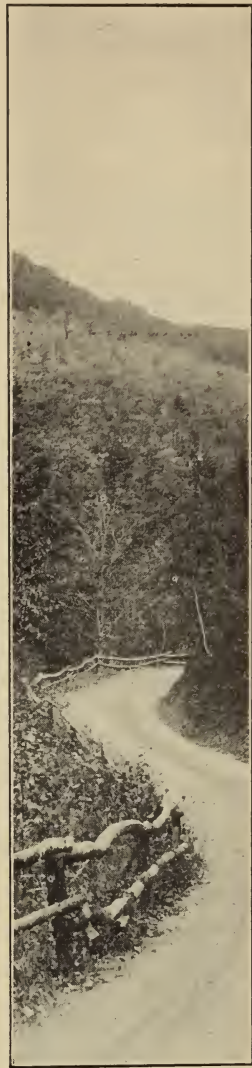
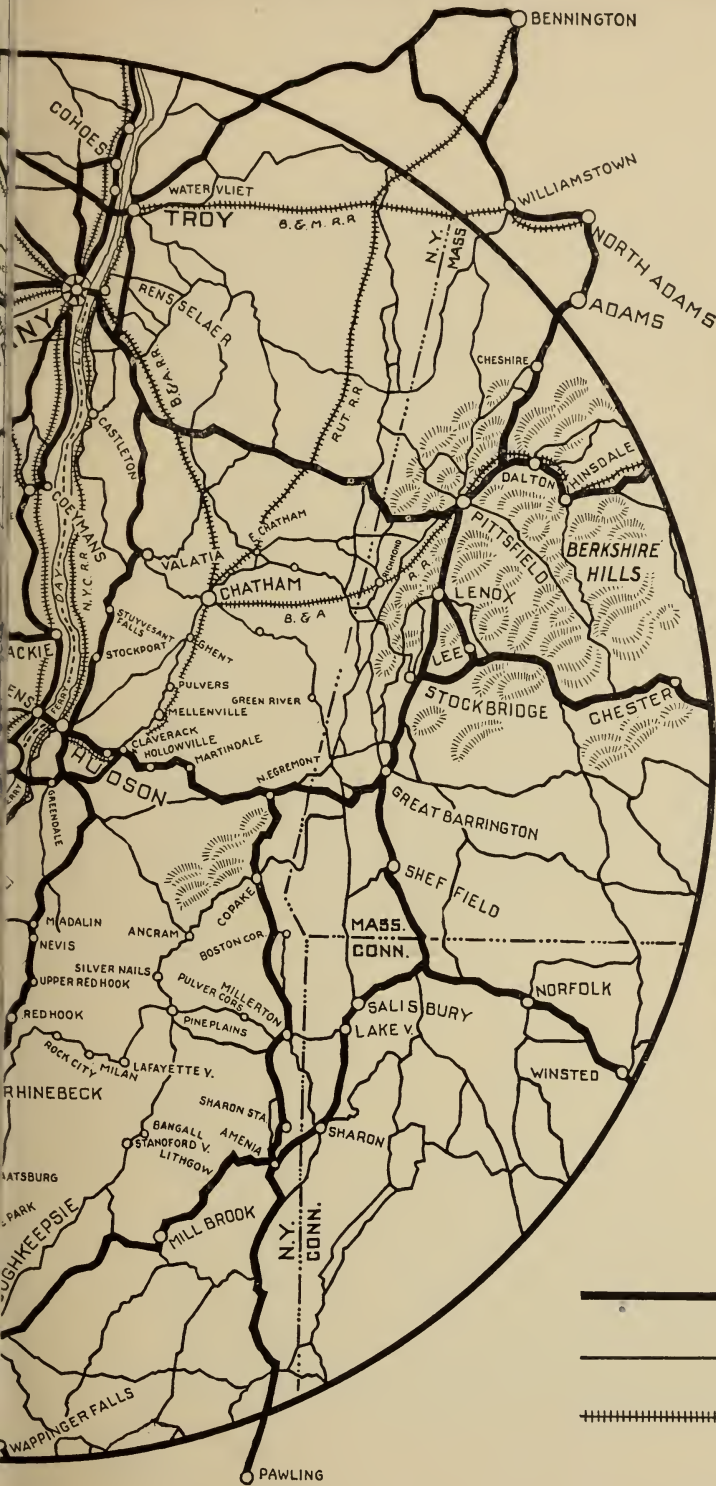
House	Proprietor	Accom.	House	Proprietor	Accom.
The Graham,	Charles I. Morey	70	Carman House,	A. Carman	50
Merwin House,	J. B. Merwin	25	Prattsville House,	Miller & Miller	25
Maben House,	W. C. Maben	15	Meadow Brook,	D. H. Tompkins	15
	Rudolph House,	Mrs. W. Rudolph			10

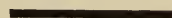




The
SCENIC CIRCLE
· TOUR ·

SHOWING POINTS *of* INTEREST
 WITHIN 50 MILES *of* CATSKILL

by Richard S. Barrett



-  STATE ROADS
-  HARD DIRT ROADS
-  RAILROADS

KISKATOM.

On the Rip Van Winkle Trail, five miles from Catskill, the pretty hamlet known as Kiskatom, the Indian term denoting the abundance of hickory nuts, is reached. The views of the main ranges of the Catskills make an attractive background for the hamlet; Kiskatom Creek provides boating, bathing and fishing; amusement halls offer plenty of diversion, and the cozy hotels and boarding houses are ideal places for vacations.

HOTELS AND BOARDING HOUSES

House	Proprietor	Accom.	House	Proprietor	Accom.
Hickory Lodge,	J. D. McDonald	100	Beinn House,	William Beinn	100
Kiskatom Hotel,	D. Pollock	100	Mountain View Farm,	W. L. Greene	50
Ferncroft,	F. Rider	40	Orchard Grove Farm,	D. Hodum	40
Sunny Brook,	W. Welker	35	Sunset Hill Farm,	H. Lasher	25



CANOEING IN THE CATSKILLS

PALENVILLE.

Irving's legendary "Village of Falling Waters," now the picturesque village of Palenville, is on the Rip Van Winkle Trail, at the opening of the celebrated Kaaterskill Canyon, the most picturesque section of Greene County.

Here a beautiful village with a handsome Memorial School, excellent hotels and boarding houses, a Country Club and splendid nine-hole golf course, a beautiful recreation hall and two delightful cottage colonies, the Highland Estate and Ledgemoor, are to be found.

HOTELS AND BOARDING HOUSES

House	Proprietor	Accom.	House	Proprietor	Accom.
New Hotel Palenville,	Henry Inteman	100	Hotel Catskill,	I. Bleir	100
Maple Grove,	F. Timmerman	120	Pine Grove House,	Kaskowitz & Hodesblatt	75
The Winchelsea,	Mrs. M. E. Doncourt	40	Chestnut Lawn		50
Green Farm House,	A. Green	20	Central House,	H. Goodwin	40
Kaaterskill Clove House,	J. O'Brien	25	Echo House,	D. Vespa	40
Airy Hill House,	J. Krauss	40			

HAINES FALLS.

The Rip Van Winkle Trail, after leading through the Kaaterskill Clove, conceded to be the prettiest bit of scenery in America, reaches Haines Falls,



HAINES FALLS

one of the most picturesque and busy resorts in the Catskills. Here Twilight, Sunset and Santa Cruz Parks, the largest cottage settlements in the Catskills, are located, and here one finds the beautiful Haines Falls, the Kaaterskill Falls, a nine-hole golf course conceded to be the most beautiful in the state, and hotels and boarding houses that are famous.

There is a variety of amusement at Haines Falls, including moving picture theatres, amusement halls, mountain climbing, tennis and baseball,



SUNSET PARK

with good roads leading to every point of interest that has made the Catskills famous, a majority of them being within five miles of Haines Falls.

HOTELS AND BOARDING HOUSES

House	Proprietor	Accom.	House	Proprietor	Accom.
Laurel House ‡		300	Twilight Inn, David Tuttle †		200
Sunset Park Inn, C. H. Becker*		225	Squirrel Inn, Mrs. A. F. Pim †		200
Ledge End Inn, The Misses Albertson †		100	Santa Cruz Inn, S. P. Walton ¶		100
Loxhurst and Cottage, C. A. Martin		100	Antlers, I. Schneiwiss		200
Glen Park House, Owen Glennon		100	Upland Farm House, Mrs. G. Legg		100
O'Hara House, H. O'Hara		40	Belle Vue House, A. Legg		75
Claremont, Rusk & Co.		75	Shady Grove House, Berman & Rogg		75
Kenwood, E. E. Pelham		60	The Vista, E. B. Haines		60
Central House, William Ayres		50	Mountain Rest, M. Rider		50
Keystone, Herman Stern		60	The Fenmore, J. Schwartz		100
Winona Inn, Laura T. Gilsbach, Sec.		35	Sunnyside House, Mrs. G. E. Knapp		25
Fern Rock, Perkel & Shifren		50	Gem of the Catskills, P. Leavy		50
Rockland Farm, A. B. Layman		50	Mountain Crest, M. Hocksprung		40
Maple Terrace, T. J. Corr		30	Renner's Hotel, R. W. Renner		50
Alpine, Mrs. G. F. Beggs		30	Balsam Grove, A. R. Legg		20
			High View House, Richard Haines		40
			Brookside, G. W. Martin		25

NOTE—‡ Laurel House Sta. * Sunset Park † Twilight Park ¶ Santa Cruz Park

CATSKILL MOUNTAIN HOUSE

A turn from the Rip Van Winkle Trail to the right at Haines Falls and a run of three miles brings the automobilist to the Hotel Kaaterskill and Catskill Mountain House.

Twenty thousand square miles of a panoramic view that includes the Hudson Valley, the Berkshires, the White Mountains and portions of five states, inspired the Leather Stocking Tales of Cooper, and helped to make Greene County famous the world over.



BIRDSEYE VIEW OF HUDSON VALLEY FROM CATSKILL MOUNTAIN HOUSE

Here the Catskill Mountain House, John Van Wagonen, manager, the pioneer hotel of the Catskills and one of the most noted hotels in America, is located, and under the same family management as when it opened ninety-nine years ago. But the old ten-room hotel has been succeeded by a modern house, with up-to-date equipment and a capacity of 400. The season opens the latter part of June and closes in September. Beach View is the post-office name, and the postoffice, telegraph and telephone offices are located in the house.

KAATERSKILL.

With a capacity of eight hundred, the Hotel Kaaterskill is not only the largest of the Catskill Mountain Hotels, but the largest mountain hotel in the world. It is in the centre of a vast mountain park, on the edge of a picturesque lake, and is in the heart of the most interesting section of the Catskills.

The Kaaterskill will be under new management this season, and will be greatly improved before the opening of the house. It will be managed by Harry Tannenbaum.

TANNERSVILLE.

The Rip Van Winkle Trail passes through Tannersville, and the tourist who passes through without seeing Tannersville and its suburbs misses some of the most interesting places in the Catskills. To the north the Onteora Club, the most exclusive cottage community, looks down on the village, while to the south the beautiful Elka Park commands a wonderful view of the surrounding country, and the Plaaterkill Valley, extending from Tannersville southeast to Platte Clove, contains wonderful scenery.

Up-to-date stores, a national bank, paved streets, and theatres, make Tannersville one of the busiest villages in the county during the summer months, and the hotels and boarding houses here are famous, while every place of interest in the mountains is easily accessible by good macadamized roads.



MAIN STREET, TANNERSVILLE
HOTELS AND BOARDING HOUSES

House	Proprietor	Accom.	House	Proprietor	Accom.
Fairmont Hotel,	S. Jacobson, Inc.	450	New Manhattan,	H. Sault	100
Cold Spring House,	Beiber & Feld-		Blythewood,	M. Hoffman	150
stein		200	Elka View House,	H. Marcus	250
American Hotel,	H. Mariash	250	The Waverly,	L. M. Blumenthal	150
Pleasant View,	M. Neustadter	150	Rose Garden,	Mrs. R. Zwickel	100
Campbell House,	M. Abeloff	100	Leach Farm House,	J. Leach	50
Scharfenberg's Hotel,	H. Scharfen-		Spring Dell House,	D. Shevlin	25
berg		60	The Rudolph,	Freda Hotaling	50
			Beech Tree Inn,	Mrs. J. Gray	50

ELKA PARK AND PLATTE CLOVE.

Turning southward at the postoffice at Tannersville and leaving the Rip Van Winkle Trail, a good road leads to Elka Park, one of the most attractive sections of the region, and to Platte Clove, at the head of the Plaaterkill Canyon.

The latter place is a small hamlet, with two boarding houses and the New York Police Sanitarium.

This region may also be reached from Saugerties.

ELKA PARK HOTELS AND BOARDING HOUSES

House	Proprietor	Accom.	House	Proprietor	Accom.
Grenoble,	W. J. Dale	60	Meadow Lawn,	T. Seiffert	50
House in the Woods,	Mrs. D. B. Smith	16	Schöharie Mansion		150
Elka Park Club,	Elka Park Asso.	75	Twin Mt. House		150
Forest Inn,	T. Curren	50	Carr Cottage,	M. L. Carr	10

HUNTER.

Hunter is on the Rip Van Winkle Trail and lies on both sides of Schoharie Creek, at the foot of Hunter Mountain and the Colonel's Chair, two of the highest mountains in the county. It is a well-known resort, with a variety of amusement.

Kaaterskill Junction, at the opening of the Stony Clove, is a small settlement in the township.

HOTELS AND BOARDING HOUSES

House	Proprietor	Accom.	House	Proprietor	Accom.
Hunter House,	Guttman & Speigel..	250	Central House,	Rosestein & Cohen	200
Arlington,	J. Stein.....	200	Prospect Mt. House,	S. Freidman....	200
St. Charles,	S. Levine.....	175	High View,	L. Harkavey.....	200
West End Hotel,	J. Wittman.....	200	Sunmit House,	D. Schiff.....	100
Breezy Hill,	S. Theil.....	125	Idle Hour Park,	A. Meisels.....	60
Shady Hill,	Mrs. S. Peron.....	100	Glen Farm,	D. Drucker.....	80
Stony View,	A. Putterman & Son...	100	Fordham House,	S. Ornstein.....	50
Hazlehurst,	A. J. Rowley.....	35	Miller Cottage,	L. Miller.....	30
			Saxe Cottage,	Charles Saxe.....	25



STONY CLOVE NOTCH, NEAR HUNTER

EDGEWOOD AND LANESVILLE.

The macadamized roads leading from Tannersville and Hunter through the picturesque Stony Clove and around the Ashokan Reservoir pass two charming hamlets in the heart of the mountains, Edgewood and Lanesville, noted for fishing and hunting, as well as for the comfort found in the boarding houses in each.

HOTELS AND BOARDING HOUSES

LANESVILLE

House	Proprietor	Accom.	House	Proprietor	Accom.
The Ruggles,	C. R. Lane.....	40	Lanesville House	50
Diamond Notch,	A. Crosby.....	40	Pleasant View,	T. H. Jansen.....	45
Lanesville Hotel,	H. D. Lane.....	30	Echo Cottage,	D. Crosby.....	40

EDGEWOOD

House	Proprietor	Accom.	House	Proprietor	Accom.
Edgewood House,	A. J. Connelly....	25	Peet Cottage,	N. A. Peet.....	15

LEXINGTON, WESTKILL AND BUSHNELLVILLE.

Continuing over the Rip Van Winkle Trail to the confluence of the West Kill and Schoharie Creek, one reaches the beautiful village of Lexington, almost surrounded by mountains, Vly mountain, the highest, reaching an elevation of 3,900-feet. Crystal Lake and Schoharie Creek provide aquatic amusement, and excellent hotels bring crowds to Lexington during the summer.



ON THE MOHICAN TRAIL

Westkill and Bushnellville are two attractive hamlets, situated in the scenic Bushnellville Clove, extending southward from Lexington to Shandaken.

HOTELS AND BOARDING HOUSES

LEXINGTON

House	Proprietor	Accom.	House	Proprietor	Accom.
O'Hara House,	Edgar O'Hara	125	The Barnard,	George O'Hara	25
Munroe House,	Arthur Felber	50	The Kipp House,	H. Millinog	50
Lexington House,	Mrs. M. Herman	100	Shady Lawn,	Mrs. R. Elliott	25
Chatfield Farm,	H. A. Chatfield	20			

WESTKILL

House	Proprietor	Accom.	House	Proprietor	Accom.
Westkill Hotel,	H. C. Flick	50	Chamberlain House,	E. A. Chamberlain	25
Spruceton House,	W. M. Dunham	20	Humphrey House,	G. Humphrey	25

BUSHNELLVILLE

House	Proprietor	Accom.	House	Proprietor	Accom.
Mountain Brook,	A. L. Cutaiar	25	Rock Terrace,	Roscoe Hogan	35
Hummel House,	E. Hummel	20	Rider House,	J. Rider	25

JEWETT, JEWETT HEIGHTS, EAST JEWETT AND MAPLECREST

Are four small hamlets in the range of mountains situated between the Rip Van Winkle and Mohican Trails, from which fairly good roads lead to the villages in question.

They are located in the wildest part of Greene County, where black bears, wildcats and other game are still found. Splendid trout streams and good boarding houses, where one enjoys higher altitudes than in the Maine Woods or Adirondacks, attract many vacationists.



VIEW FROM THE MOHICAN TRAIL AT EAST WINDHAM

HOTELS AND BOARDING HOUSES

JEWETT

House	Proprietor	Accom.	House	Proprietor	Accom.
Jewett Heights House, Chase & Baldwin			Tower Mt. House, E. Pond		90
		70	Greystone House, R. L. Towner		30
	Mt. Side House, M. O. Bailey				85

EAST JEWETT

House	Proprietor	Accom.	House	Proprietor	Accom.
Wyanola, V. W. Morrow		30	Cherry Hill Farm, Mrs. C. Simpkins		25
The Frederick, Frederick Rousel		6	Hillside Farm, W. H. Hager		10
Onteora Dairy Farm, F. Woodworth		15	Woodcrest, J. Woodworth		10
	Bonnie Doon, C. Lockwood				12

BIG HOLLOW (P. O. Maplecrest, N. Y.)

House	Proprietor	Accom.	House	Proprietor	Accom.
The Sugar Maples, S. A. Moseman		35	Mountain Rest, J. W. Van Loan		30
Slater House, Mrs. H. E. Slater		20	Woodworth House, F. Woodworth		25
San Souci Cottage, John J. Martin		35	Van's Cottage, S. Van Valkenburgh		10
McGlashen House, G. McGlashen		30	Batavia Rock House, R. A. Law		30
	Ruland Farm House, Geo. W. Ruland				10

ATHENS.

Athens lies on the west bank of the Hudson, directly opposite the latter city, with which it is connected by a modern ferry, new this season, making connections with the New York Central, the Hudson River Day Line, and roads to the Berkshires. The village is one of the oldest in the Empire State, having been incorporated in 1805. Among the landmarks here are the old Van Loon house, built in 1708 with brick brought from Holland, and Black Rock (Macawomics Rock), which marked the boundary of the territory claimed by the Delaware Indians, on the south, and the Iroquois, on the north.

Here are Modern Schools, an endowed library, five churches, an opera house, three excellent garages, and macadamized roads leading to every part of the Catskills and the Berkshires, and the village commands wonderful views of the Catskills. Fishing, boating, bathing and baseball are among the diversions.



BIRDSEYE VIEW OF ATHENS

HOTELS AND BOARDING HOUSES

House	Proprietor	Accom.	House	Proprietor	Accom.
Stewart House,	Mrs. H. Post	50	Kroebel House,	Mrs. M. Kroebel	30
Bayside Lodge,	Wehling Minnerly	50	Howard Hall,	C. H. Haussler	50
	Woodmere,	B. Sprague			40

COXSACKIE.

Coxsackie, the second largest village in the county, is a charming residential village with splendid transportation facilities, and is one of the gateways to Urlton, Greenville, Climax, Surprise and Medway, stages for which connect with the West Shore Railroad.

HOTELS AND BOARDING HOUSES

House	Proprietor	Accom.	House	Proprietor	Accom.
The Kaksackie,	Mrs. B. D. Wilson	40	Maple Shade Farm,	C. Conrad	35
Park Hotel,	F. S. Vermilyea	50	Cobblestone Inn,	W. Perry	40

NEW BALTIMORE

Is a small hamlet bordering on Albany County, and is well known to yachting parties and tourists between Albany and the Catskills, and has a hotel and several boarding houses.

HOTELS AND BOARDING HOUSES

House	Proprietor	Accom.	House	Proprietor	Accom.
Gedney Hotel	50	Shady Grove Farm,	G. C. Robbins..	25
			Rose Farm, Henry Rose	20

MEDWAY, CLIMAX, SUNSIDE AND SURPRISE.

Four modest hamlets, with small boarding houses, where attractive scenery, pleasant surroundings and moderate rates for board bring a number of vacationists annually, are known as Medway, Climax, Sunside and Surprise. They are reached by way of Coxsackie.

HOTELS AND BOARDING HOUSES

MEDWAY

House	Proprietor	Accom.	House	Proprietor	Accom.
Condit Lake House,	A. Fredenburgh	40	Maple Shade Farm,	C. Conrad.....	35
	Bonnie Orchard Farm,		C. Robbins..		10

CLIMAX

House	Proprietor	Accom.
Bonnie Orchard Farm,	C. Robbins..	10

SUNSIDE

House	Proprietor	Accom.	House	Proprietor	Accom.
Mountain Spring Farm,	Grewing & Peters	70	Maple Crest,	W. R. Distin.....	15

SURPRISE

House	Proprietor	Accom.	House	Proprietor	Accom.
Mountain Breeze,	L. Bogardus.....	35	Orchard Grove,	A. P. Blenis.....	25

NORTON HILL.

Norton Hill is another little hamlet, reached by way of Catskill and Cairo, where a number of small houses are favorably known.

HOTELS AND BOARDING HOUSES

House	Proprietor	Accom.	House	Proprietor	Accom.
Balsam Shade Retreat,	Miss C. E. Stannard	25	The Homestead,	Mrs. M. G. Morrison	15

GAYHEAD.

Directly North of South Cairo and overlooking the valley of Catskill Creek, Gayhead is scattered over a considerable section of the mountains and has many wonderful outlooks from which the finest views of the Catskill ranges are to be obtained. There is little diversion here, but for rest and quiet and excellent accommodations at moderate rates, Gayhead can be highly recommended.

HOTELS AND BOARDING HOUSES

House	Proprietor	Accom.	House	Proprietor	Accom.
Golden Hill House,	H. Hallock.....	40	Summit View,	Mrs. K. Birk.....	30
Mountain Retreat,	C. Anderson....	35	Twin Spring,	D. Sutton.....	14

URLTON.

At the summit of the Potic Hills, Urlton has elevation, attractive scenery, plenty of amusement and a number of houses where moderate rates attract the capacity of each house during the season, which lasts from May until November.

HOTELS AND BOARDING HOUSES

House	Proprietor	Accom.	House	Proprietor	Accom.
Potic Mountain House,	L. B. Martine	60	Urlton Villa,	W. M. Steele	60
King's Villa,	A. C. King	50	Bonnie View,	J. Caulfield	60
Nightingale House,	J. Karnick	50	Roe Farm House,	Mrs. C. Roe	35
Ludwig Farm House, Mrs. K. Ludwig 20					

GREENVILLE.

Greenville is an attractive village in the Potic Hills, the business center for West Greenville, Greenville Center and Norton Hill, with prosperous farms and comfortable boarding houses that appeal strongly to the class of vacationists who prefer cutings in the quieter sections, furnishing ideal



IN THE CATSKILLS

accommodations at rates that are exceedingly moderate, together with scenery that appeals strongly to the artistic sense.

HOTELS AND BOARDING HOUSES

House	Proprietor	Accom.	House	Proprietor	Accom.
Shady Hill Farm,	Mrs. S. H. Beer	40	Dairy Farm House,	H. Hunt	40
Greenville Inn,	Paul Willig	35	Locust Hill Farm,	A. W. Haight	35
Hillside Cottage,	Mrs. M. Cameron	30	Rundell Farm,	Mrs. W. Rundell	35
Hoose Farm,	Arthur Hoose	30	Horton Farm,	F. D. Horton	25
Ingleside Farm,	W. T. Ingalls	25	Sanford Farm,	Mrs. E. M. Evans	25
Grape Shade House,	Mrs. J. G. Bell	20	The Daisy Farm,	Mrs. A. W. Ague	20

HALCOTT.

Halcott is the smallest township in the county and has but one settlement, Halcott Centre, reached by Fleischmanns, the rest of the township being a wilderness as dense as the Adirondacks.

HOTELS AND BOARDING HOUSES

House	Proprietor	Accom.	House	Proprietor	Accom.
Snowden House,	A. Wileman	75	Mountain Dale,	Mrs. G. Gordon	30
Mt. Land Farm,	C. A. Ballard	60	Van's Cottage,	Lorenzo Van	25
Van Cottage,	R. Van Valkenburgh	25	Crosby Farm,	Mrs. W. K. Crosby	20
Peets House,	H. B. Peets	30	South Mt. Cottage,	F. T. Moseman	25

FREEHOLD.

Freehold is attractively located on Catskill Creek and has all the essentials for the vacationist who prefers to enjoy his relaxation out of the beaten track, where beautiful scenery and comfortable boarding houses combined with moderate rates make his outing a quiet but inexpensive one, and where the freedom from formal affairs is more noticeable than at larger resorts. These requirements may be found at

HOTELS AND BOARDING HOUSES

House	Proprietor	Accom.	House	Proprietor	Accom.
Cherry Hill Homestead,	Mrs. A. L. Tunison	35	Villa Raffo,	P. L. Raffo	75
Brookside Farm,	Mrs. P. Cameron	35	Freehold House,	Mrs. J. Parks	30
Evergreen Croft,	W. P. Seabridge	25	Maplehurst,	Mrs. W. J. Parks	25
Chestnut Cottage,	Mrs. L. H. Garrison	25	Breeze Lawn,	Mrs. P. Story	20
			Woodland Cottage,	W. Stotesbury	20

DURHAM, EAST DURHAM AND SOUTH DURHAM.

Three pretty hamlets in the township of Durham, where small but cozy boarding houses appeal to the lovers of a quiet vacation. Hotels located in these places include

HOTELS AND BOARDING HOUSES

DURHAM

House	Proprietor	Accom.	House	Proprietor	Accom.
Locust Hill Farm,	Mrs. G. Finch	15	Minerva Lodge,	M. J. Holmes	12

EAST DURHAM

House	Proprietor	Accom.	House	Proprietor	Accom.
Weldon House,	P. J. Weldon	125	Edgewood Falls Farm,	Mrs. G. Osterhout	75
Woodruff House,	E. L. Woodruff	50	The Villa,	Mrs. O. Van Tassel	30
Locust Shade,	Mrs. E. Arfman	35			

SOUTH DURHAM

House	Proprietor	Accom.	House	Proprietor	Accom.
Mountain Side Farm,	Mrs. M. Sanford	25	Breeze Farm House,	N. E. Barnes	20

ALSEN AND SMITH'S LANDING.

Alsen and Smith's Landing are the sections lying along the river south of Catskill. They are the centre of the cement manufacturing industry, and three large plants located here form the largest industry in Greene County—an industry that adds to the business activity of Catskill and the surrounding hamlets.

SAUGERTIES.

Saugerties, a charming village, on the Hudson and Saugerties Creek, borders on Greene County, with roads through the beautiful Plaaterkill clove, leading to Platte Clove and Elka Park and to Palenville and the Kaaterskill Clove.

A ferry service maintained between Tivoli and Saugerties with stage connections for many points in the Catskills and Evening Line Steamboat Service, the Saugerties & New York Steamboat Company, between New York and Saugerties, makes Saugerties, one of the important gateways to the Greene County Catskills.

The village itself has a large number of charming and cozy boarding houses.



A BIT OF SCHOHARIE CREEK

Average Elevations of the Resorts in Greene County.

	Feet		Feet
Acra	1,010	Hensonville	2,250
Athens	300	Jewett	2,110
Ashland	1,800	Kaaterskill	2,780
Big Hollow	1,980	Kaaterskill Junction	1,600
Beach View	2,350	Kiskatom	800
Bushnellville	1,420	Kyle Camp	1,000
Catskill	600	Lanesville	1,355
Cairo	900	Leeds	650
Durham	1,250	Lexington	1,329
Edgewood	1,789	Purling	980
East Durham	1,300	Platte Clove	2,200
Elka Park	2,350	Prattsville	1,450
East Windham	2,300	Palenville	1,050
East Jewett	2,100	Round Top	1,120
Freehold	1,250	South Cairo	600
Green Lake	700	Surprise	1,120
Gayhead	1,020	Sunside	1,100
Greenville	1,075	South Durham	1,500
Hunter	1,600	Tannersville	1,863
Halcott Center	1,510	Urlton	1,200
Haines Falls	2,200	West Kill	1,420
Windham	2,250		

ELEVATIONS OF MOUNTAIN PEAKS OF GREENE COUNTY.

	Feet.
Hunter Mountain, Hunter	4,052
Black Dome, Hensonville	4,004
Thomas Cole Mountain, Big Hollow.....	3,975
Black Head, Cairo	3,965
Big West Kill Mountain, West Kill	3,920
Vly Mountain, Lexington	3,900
Plateau Mountain, Tannersville	3,875
Van Valkenburgh Peak, Spruceton	3,824
Windham High Peak, East Windham	3,824
Sugar Loaf Mountain, Tannersville	3,807
High Peak, Haines Falls	3,670
Twin Mountain, Platte Clove	3,650
Evergreen Mountain, Spruceton	3,650
Indian Head, Platte Clove	3,581
Round Top, Haines Falls	3,500
Bloomberg, Prattsville	3,456
North Mountain, Catskill Mountain House	3,456
Hunterfield Mountain, Prattsville	3,365
Richmond Mountain, Windham	3,200
Colonel's Chair, Hunter	3,200
Plaaterkill Mountain, Platte Clove	3,200
East Kill Mountain, Hunter	3,190
Jewett Mountain, Jewett Heights	3,100
Tower Mountain, Jewett Heights	3,000
Mount Pisgah, Windham	2,931
Mount Hayden, Windham	2,900
Parker Mountain, Oteora Club	2,850
Ginseng Mountain, East Windham	3,790
Mount Zoar, East Windham	2,690
Bee Line Mountain, West Kill	3,300
Kaaterskill Mountain, Hotel Kaaterskill	2,500
Clum Hill, Tannersville	2,372
Orchard Knob, Catskill Mountain House	2,227
Acra Point, Acra	3,035
Cairo Round Top, Cairo	1,420



OFFICERS OF CATSKILL CHAMBER OF COMMERCE

President, WILLIAM K. HAGGINBOTHOM Secretary, JOHN C. WELSH
 Vice President, VICTOR SMITH Treasurer, GEORGE A. DEANE

EXECUTIVE COMMITTEE

Michael Cimorelli	Lewis R. Magee	Grant E. Freer
Richard S. Barrett	F. Alan Craigie	John J. Henderson
M. Edward Silberstein	P. W. Hallenbeck	Howard E. Muller
Rudolph W. Plusch	Jacob L. Goldberg	Harry E. Joseph
Dr. L. L. Parker	Clarence Howland	Frank H. Cooke

Director of Publicity, RICHARD S. BARRETT

GREENE COUNTY'S LIVE WIRES.

Publication of this book has been made possible by the co-operation of the Organizations, Transportation Companies, Business Men and Hotel and Boarding House Managers listed herewith, as the leaders in their respective communities.

OFFICIALS

J. C. Tallmadge.....County Judge
 W. B. Donahue.....Postmaster
 Floyd F. Jones.....County Clerk

BUSINESS ASSOCIATIONS

Chamber of Commerce.....Catskill
 Boosters' ClubCairo
 Wendell S. Sherman..County Treasurer

TRANSPORTATION COMPANIES

Hudson River Day Line.....New York
 Ulster & Delaware R. R.....Kingston
 Saugerties & N. Y. Stmbt. Co.Saugerties
 Catskill Evening Line.....New York

BANKS

Tanners' NationalCatskill
 Catskill NationalCatskill
 Catskill SavingsCatskill
 Athens NationalAthens
 Catskill Savings & Loan Assn.,..Catskill

INSURANCE COMPANIES

Co-Operative Mutual.....Catskill
 Commercial Mutual.....Catskill
 Pioneer Co-Operative.....Greenville

PUBLIC UTILITIES

Upper Hudson Electric & R. R. Co...
 Catskill

ATTORNEYS

Osborn, Bloodgodd, Wilbur & Fray..
 Catskill
 P. W. Decker.....Catskill
 Orloff T. Heath.....Catskill
 Harring & Betts.....Catskill
 M. C. Moseman.....Tannersville
 John C. Welsh.....Catskill
 J. L. Malcolm.....Catskill

NEWSPAPERS

The Examiner.....Catskill
 The Recorder.....Catskill
 Daily Mail.....Catskill

CLOTHIERS

Harry E. Joseph.....Catskill
 R. J. Stahl.....Catskill
 J. L. Goldberg.....Catskill

REAL ESTATE & INSURANCE

O. T. Heath.....Catskill
 P. W. Decker.....Catskill
 P. W. Decker.....Catskill
 A. Semenoff.....Catskill
 Harring & Betts.....Catskill
 Paul R. Morrison.....Catskill
 Jones, Goldin & Jones.....Catskill
 Elias Lasher.....Catskill
 Charles WeisselLeeds
 George B. Van Valkenburgh...Catskill
 George W. Swartwout.....Catskill
 T. B. Beach & Son.....Catskill

AUTOMOBILE STAGES & HACKMEN

Charles KelseyOak Hill
 William GarrisonPalenville
 L. DuBoisPalenville
 Arthur MoonCatskill
 Charles AllePrattsville

HARDWARE STORES

C. Beardsley & Son.....Catskill
 Day & Holt Co.....Catskill
 Catskill Hardware Co.....Catskill

PHYSICIANS

George L. Branch.....Catskill
 Fred. W. Goodrich.....Catskill
 Honeyford & Jennings.....Catskill
 S. A. Holcomb.....Palenville

BUSINESS ASSOCIATIONS (Continued)

Chamber of Commerce.....Tannersville

FLOUR, FEED & GRAIN DEALERS

Salisbury & Austin Co.....Catskill
George W. Holdridge & Co.....Catskill

RESTAURANTS

New York Restaurant.....Catskill
Smith's RestaurantCatskill

VARIETY STORES

A. W. Wright.....Catskill
Lerner Bros.Catskill

FURNITURE & UNDERTAKING

Deane & Deane.....Catskill

SPORTING GOODS

M. CimorelliCatskill

COTTAGES TO RENT

The Highland Colony, Mrs. Anna B.
HillPalenville

GENERAL STORES

H. L. Boughton Store.....Catskill
Philip Richman.....Catskill
I. W. Margolius.....Catskill

AUTOMOBILE DEALERS & GARAGES

Catskill GarageCatskill
Amos Post.....Catskill
Lacy & Norton.....Catskill
W. A. Haines & Son.....Catskill
Stewart Trucks Co.....Albany
Greene Co. Motor Co.....Catskill
W. I. Van Dusen.....Athens
W. A. Haines & Son.....Catskill
W. I. Van Dusen.....Athens
H. B. Moore.....Windham
Alex Yannone.....Catskill

PAINT STORES

C. A. Wilbur.....Catskill

DRUGGISTS

Champlin Clarke.....Catskill
L. B. Decker.....Catskill
R. A. Austin.....Cairo

JEWELERS

P. W. Hallenbeck.....Catskill
Ben Hartmann.....Catskill

VETERINARY SURGEONS

Dr. L. L. Parker.....Catskill

CONTRACTORS & SUPPLIES

Catskill Supply Co.....Catskill
Jas. B. Holdridge.....Catskill

RECREATION HALLS

Phelan-DeLuryLeeds
RecreationPalenville
Gutrie'sGreen Lake
Baldwin'sPurling

DRY GOODS

Cooper's Dry Goods Store.....Catskill
Jos. BreunigLeeds

COUNTY OFFICIALS (Continued)

Wendell S. Sherman.....Catskill

BAKERIES

Weinstein, Golden & Erchman...Catskill
William DeitzCatskill
V. Della Morte.....Catskill
J. S. Sperling.....Catskill

**ELECTRICAL SUPPLIES & PHONO-
GRAPHS**

H. N. Warden.....Catskill

FRUIT & VEGETABLES

C. J. Leone.....Catskill

TIRES & VULCANIZING

Catskill Tire & Vulcanizing Co..Catskill

SHIRT WAIST FACTORIES

Braunstein Bros. & Elzufon....Catskill

PHOTOS & MATERIALS

Clarke's Kodak Shop.....Catskill
Paul R. Morrison.....Catskill

MERCHANT TAILORS

George C. Lynes.....Catskill
S. Fontanella & Son.....Catskill

**NEWSDEALERS, STATIONERS &
CIGARS**

L. R. Magee.....Catskill

MOTOR OILS & GASOLINE

A. R. Newcombe & Co., Inc.....Catskill

SHOE STORES

Smith's Shoe Store.....Catskill
John J. Henderson.....Catskill

SHOE REPAIRING

M. DiCaprio.....Catskill

MEAT MARKETS

C. V. Post.....Catskill
W. E. Low.....Catskill
C. C. Bloom.....Catskill
F. M. Slauson.....Catskill
S. Rabinowitz.....Catskill

GROCERS

The H. C. Smith Co.....Catskill
C. F. Travis.....Catskill
William Davis.....Catskill
Schubert Bros.Catskill
John Marsh & Son.....Catskill
L. F. Teich.....Leeds
E. A. Dedrick.....Palenville
A. Saxe & Co.....Palenville

ICE DEALERS

Cauterskill Ice Co.....Catskill

COAL DEALERS

W. J. Hughes.....Catskill
R. E. Smith.....Catskill
W. Walter Henderson.....Catskill

CANDY & ICE CREAM PARLORS

L. MakrisCatskill

HOTELS AND BOARDING HOUSES

CATSKILL

New Hotel Saulpaugh The Norwood
 Park Grove House Grant House
 The Allerton Smith House
 Edgemere Creekside
 Dunwoodie Farm Sylvan Retreat
 White House The Elwood

CAIRO

Round Top House

PALENVILLE

New Palenville Hotel Winchelsea

LEXINGTON

O'Hara House The Barnard

PURLING

Meadow Brook Farm The Dellwood
 Baldwin's Hotel Pine Grove House

LEEDS

Van Duesen Mansion The Madison
 Pine Grove House Brooklyn House
 St. George Hotel Margaret House
 White House Elizabeth House
 Phelan DeLury House

BEACH VIEW

Catskill Mountain House

EAST WINDHAM

Crystal Spring Inn Butts' Hotel
 Grand View Mt. House

WINDHAM

Pleasant View House Coe's Hotel
 Brainard Farm Osborn House
 The Pines Hayden House

ACRA

Groveside Cottage Cedar Lawn
 Seeth's Hotel

HENSONVILLE

Hensonville Heights House

ROUND TOP

Glens Falls House Maple Lawn

GREEN LAKE

Green Lake Casino Perry House
 Gutrie's Farm Boarding Houses

HAINES FALLS

Sunset Park Inn O'Hara House
 Glen Park House Loxhurst
 Renner's Hotel The Vista

The Alpine

SOUTH CAIRO

Pine Villa

PRATTSVILLE

The Graham

MAPLECREST

Van's Cottage

URLTON

Ludewig Farm House



NEW YORK WORLD INFORMATION BUREAU

THE NEW YORK WORLD, in connection with the Catskill Chamber of Commerce maintains an Information Bureau at Catskill from May 1st to September 15th, in charge of people familiar with every section of the Catskills, the Shawangunks, the Berkshires and the Adirondacks, whose services are at your disposal without charge.

This office will reserve rooms at hotels, give full information regarding routes to other resorts, and help to make pleasant your stay in the Catskills.

AVERY
CLASSICS

